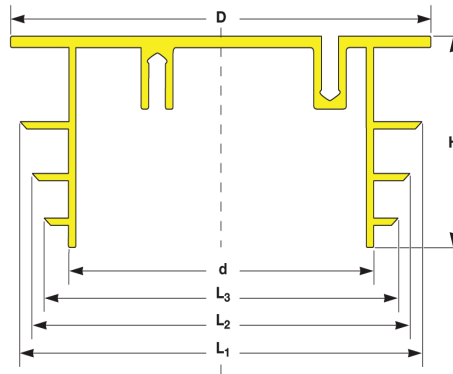




Lamellenstop type EP 230



Buis - maten (in mm)			Plug - Maten (in mm)						Vepackingseenheid	Artikel
Ø OD	Ø ID		D	L1	L2	L3	d	H		
D	min.	max.								
21.3	14.0	19.0	21.0	20.0	17.3	14.6	8.7	28.0	6,000	EP 230/L 21.3
25.0	18.0	25.0	24.3	25.3	22.2	20.0	15.0	28.0	5,000	EP 230/L 25.0
30.0	24.0	29.0	29.2	30.0	27.2	26.4	18.0	28.0	3,000	EP 230/L 30.0
38.0	28.0	37.0	37.3	38.0	34.6	32.0	22.5	28.0	2,000	EP 230/L 38.0
42.4	36.0	42.0	41.5	43.5	41.7	38.2	28.2	32.0	1,500	EP 230/L 42.4
50.0	42.0	50.0	49.5	50.3	47.6	43.6	34.5	32.0	1,000	EP 230/L 50.0
57.0	49.0	57.0	56.0	57.2	54.4	50.4	41.5	32.0	800	EP 230/L 57.0
63.5	55.0	63.0	62.5	63.5	59.0	55.5	47.2	32.0	700	EP 230/L 63.5
70.0	62.0	69.0	68.5	70.0	67.0	63.0	55.0	32.0	500	EP 230/L 70.0
76.0	69.0	75.0	75.0	75.5	73.0	69.0	60.0	32.0	400	EP 230/L 76.0
85.0	73.0	81.0	84.0	81.5	79.0	76.0	67.0	32.0	350	EP 230/L 85.0
88.9	82.0	88.0	87.9	88.5	85.5	82.0	73.0	32.0	300	EP 230/L 88.9
95.0	85.0	94.0	94.5	95.0	90.0	88.0	78.0	32.0	300	EP 230/L 95.0
101.6	93.0	101.0	100.0	102.0	98.0	95.0	85.0	32.0	250	EP 230/L 101.6
108.0	98.0	107.0	106.5	108.0	105.0	101.5	92.0	32.0	200	EP 230/L 108.0
114.3	90.0	110.0	113.0	112.0	-	112.0	80.0	38.0	175	EP 230/L 114.3
121.0	97.0	117.0	119.0	118.0	-	118.0	87.0	38.0	150	EP 230/L 121.0
127.0	102.0	123.0	125.0	124.0	-	124.0	92.0	38.0	150	EP 230/L 127.0
133.0	110.0	129.0	131.5	130.0	-	130.0	99.0	38.0	125	EP 230/L 133.0
139.7	113.0	133.0	138.5	134.0	-	134.0	102.0	38.0	125	EP 230/L 139.7
146.0	126.0	144.0	145.0	145.0	-	145.0	115.0	38.0	110	EP 230/L 146.0
152.4	132.0	148.0	151.0	149.0	-	149.0	121.0	38.0	100	EP 230/L 152.4
159.0	139.0	154.0	157.0	155.0	-	155.0	128.0	38.0	90	EP 230/L 159.0
165.1	145.0	161.0	163.0	162.0	-	162.0	134.0	38.0	75	EP 230/L 165.1
168.3	145.0	161.0	167.0	162.0	-	162.0	134.0	38.0	75	EP 230/L 168.3
177.8	157.0	175.0	177.0	176.0	-	176.0	146.0	38.0	65	EP 230/L 177.8