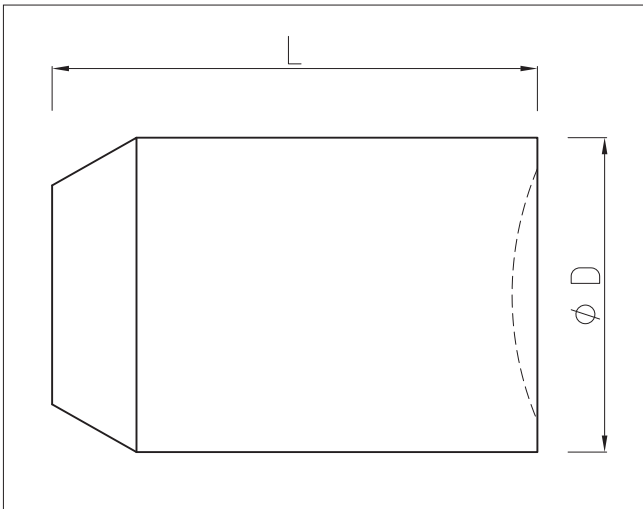




Foam Pig type PU-HD-PL

The high density plain foam pig is used for onstream pigging, as well as cleaning and dewatering. The high density foam pig shows the highest wear and tear resistance and is provided with a strong polyurethane back-seal in red colour. The high density foam pig is tightly seated in the pipeline and will traverse diameter reductions upto 15%. From 18" top also covered with polyurethane elastomer red coloured.



Standard dimensions in mm, Standard deviation +/- 2%.
Special dimensions and executions available upon request.
Density: 110 kg/m³ (9 lbs/cft)
Maximum diameter reduction: 15%

Size	D x L	Weight (kg)
2"	60x160	0.05
2.1/2"	75x155	0.08
3"	85x155	0.10
4"	110x195	0.20
5"	139x220	0.30
6"	168x266	0.70
7"	177x280	0.80
8"	215x330	1.40
10"	260x415	2.75
12"	321x510	4.80
14"	346x530	5.80
16"	410x595	9.00
18"	455x660	12.50
20"	505x760	17.50
22"	555x810	23.00
24"	605x880	29.00
26"	665x990	40.00
28"	710x945	43.00
30"	760x1130	59.00
32"	810x1170	70.00
34"	855x1340	89.00
36"	910x1370	103.00
38"	960x1370	114.00
40"	1010x1470	136.00
42"	1060x1580	160.00
44"	1120x1640	185.00
46"	1160x1720	210.00
48"	1220x1760	236.00
56"	1420x2100	382.00
60"	1520x2230	537.00
64"	1620x2600	615.00
76"	1940x2820	1050.00
80"	2030x3000	1500.00