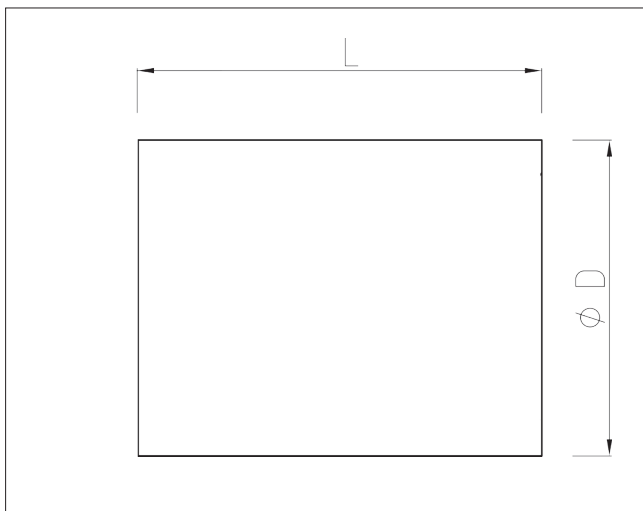




Foam Pig cylindrical

The soft foam pig is mostly used for frequent wiping or for air drying after hydrostatic testing. The soft foam pig has excellent water-absorption properties. The soft foam pig will traverse diameter reductions up to 50%.

Dimensions and weight



Standard dimensions in mm, standard deviation +/- 2%.
Special dimensions and executions available upon request.
Density: 20 kg/m3 (1½ lbs/cft)
Maximum diameter reduction: 50%

Size	D x L	Weight (kg)
2"	75x120	0,02
2.1/2"	95x150	0,02
3"	100x160	0,03
4"	130x200	0,06
5"	170x300	0,10
6"	200x300	0,17
7"	220x350	0,20
8"	250x360	0,30
10"	310x440	0,57
12"	370x520	0,88
14"	430x600	1,52
16"	490x680	2,24
18"	540x750	3,20
20"	610x840	4,00
22"	660x850	5,20
24"	730x920	6,40
26"	760x950	9,20
28"	800x1000	10,40
30"	850x1000	12,00
32"	880x1100	15,20
34"	970x1100	17,60
36"	1000x1150	20,40
38"	1090x1200	23,20
40"	1120x1400	28,00
42"	1170x1500	32,80
44"	1230x1600	37,60
46"	1290x1600	40,80
48"	1350x1700	48,00
56"	1550x1900	79,20
60"	1650x2100	103,20
64"	1750x2250	116,00
80"	2200x2800	144,80