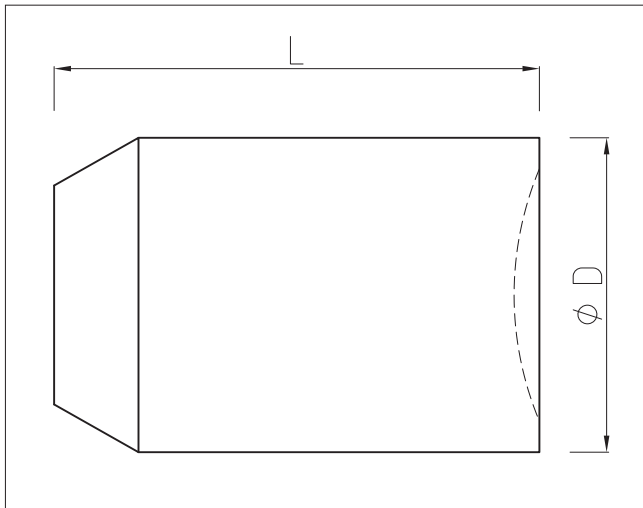




Foam Pig type PU-HD-WB

The wire brush foam pig is provided with helical band of flame hardened carbon steel brushes (also available with nylon brushes). The wire brush is set at an angle in order to increase cleaning effect. These brushes generate a pipe wall cleaning and scraping effect and will remove scale, rust and sediments. The wire brush foam pig will traverse diameter reductions upto 10%. The wire brush foam pig is also available with stainless steel or plastic brushes.



Standard dimensions in mm, Standard deviation +/- 2%.
Special dimensions and executions available upon request.
Density: 110 kg/m³ (9 lbs/cft)
Maximum diameter reduction: 10%

Size	D x L	Weight (kg)
2"	60x145	0.22
2.1/2"	72x155	0.28
3"	85x155	0.35
4"	110x195	0.58
5"	135x220	0.77
6"	168x266	1.30
7"	177x280	1.50
8"	215x330	2.40
10"	260x415	4.40
12"	321x510	7.20
14"	348x530	8.80
16"	410x595	14.00
18"	463x760	17.00
20"	513x760	23.00
22"	563x810	30.00
24"	613x880	37.00
26"	673x990	50.00
28"	718x945	55.00
30"	768x1130	75.00
32"	818x1170	86.00
34"	863x1340	105.00
36"	918x1370	120.00
38"	968x1370	130.00
40"	1018x1470	160.00
42"	1068x1580	185.00
44"	1128x1640	215.00
46"	1168x1720	240.00
48"	1228x1760	270.00
56"	1430x2100	425.00
60"	1540x2230	595.00
64"	1640x2600	680.00
76"	1960x2820	1150.00
80"	2050x3000	1600.00